



BUILDING A COLLABORATIVE

Katherine Skinner, PhD

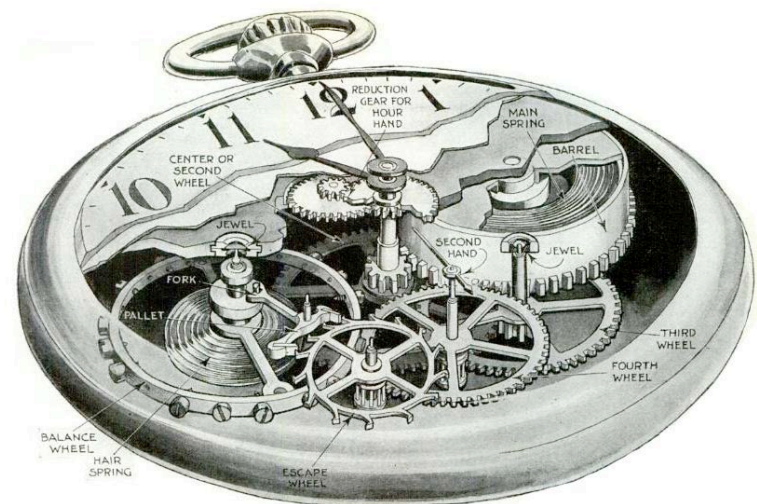
Indiana State Library

February 4, 2016

EDUCOPIA
INSTITUTE

In the next 30 minutes... (tick tock...)

- Collaborative purpose
- Characteristics of healthy collaboratives
- Managing a collaborative
- Collaborative governance models
- Collaborative example



col·lab·o·ra·tion

/kəˌlabəˈrāSH(ə)n/

noun

noun: **collaboration**; plural noun: **collaborations**

the action of working with someone to produce or create something.

"he wrote on art and architecture **in collaboration with** John Betjeman"

- something produced or created by collaboration.

"his recent opera was a collaboration with Lessing"

Origin

LATIN

LATIN

collaborare → collaboratio → collaboration

work together

mid 19th century

mid 19th century: from Latin *collaboratio(n-)*, from *collaborare* 'work together.'



Part 1: Collaborative Purpose

Purpose



Trust



Source: Gigafoto castellera de la diada de la Mercè de colles locals GigaPhoto Agency, <http://www.lavanguardia.com/actualitat-castellera/20131011/54388755586/publiquen-gigafoto-castellera-merce-colles-locals.html>

Reciprocity



Part 2: Characteristics of healthy cooperatives

Communication



“Glue”



Part 2: Characteristics of healthy cooperatives

Your Collaborative

- What will your governance model be?
- What conditions will managers OF your network and managers IN your network need to actively manage for success?

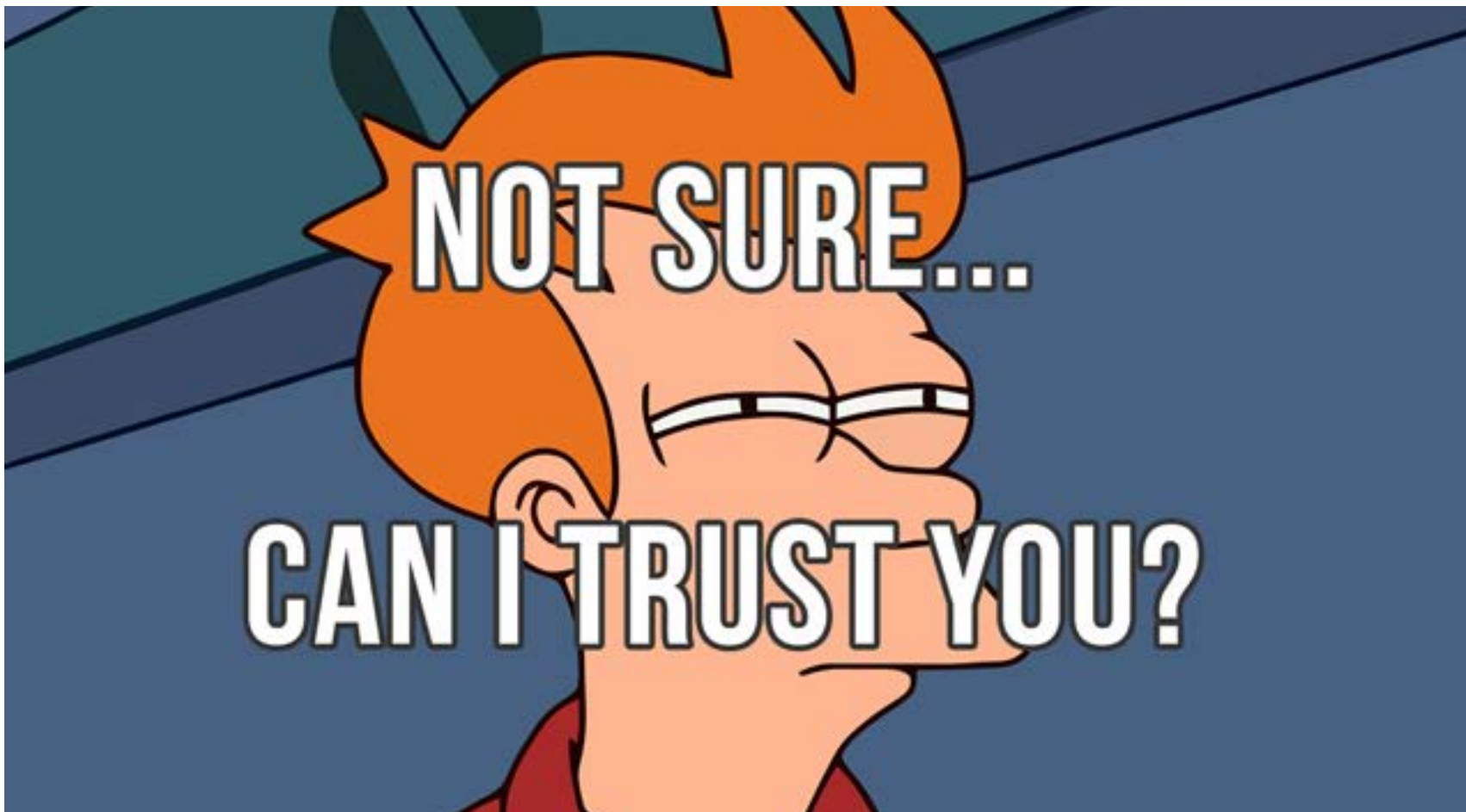
Collaborative tasks

- Management of Accountability
- Management of Legitimacy
- Management of Conflict
- Management of Commitment
- Management of Design

Accountability



Legitimacy

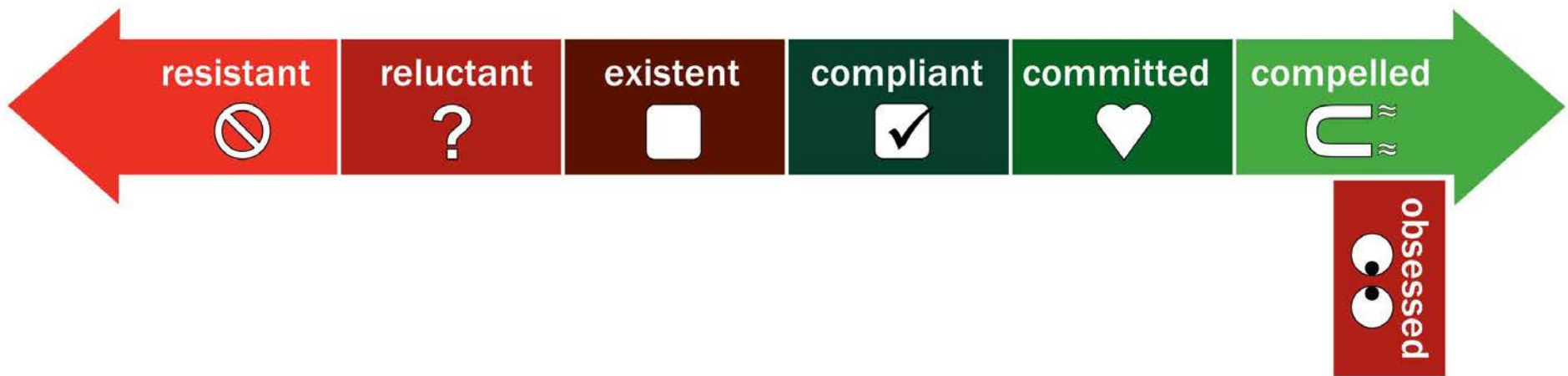


Conflict



Commitment

COMMITMENT CONTINUUM™



Design



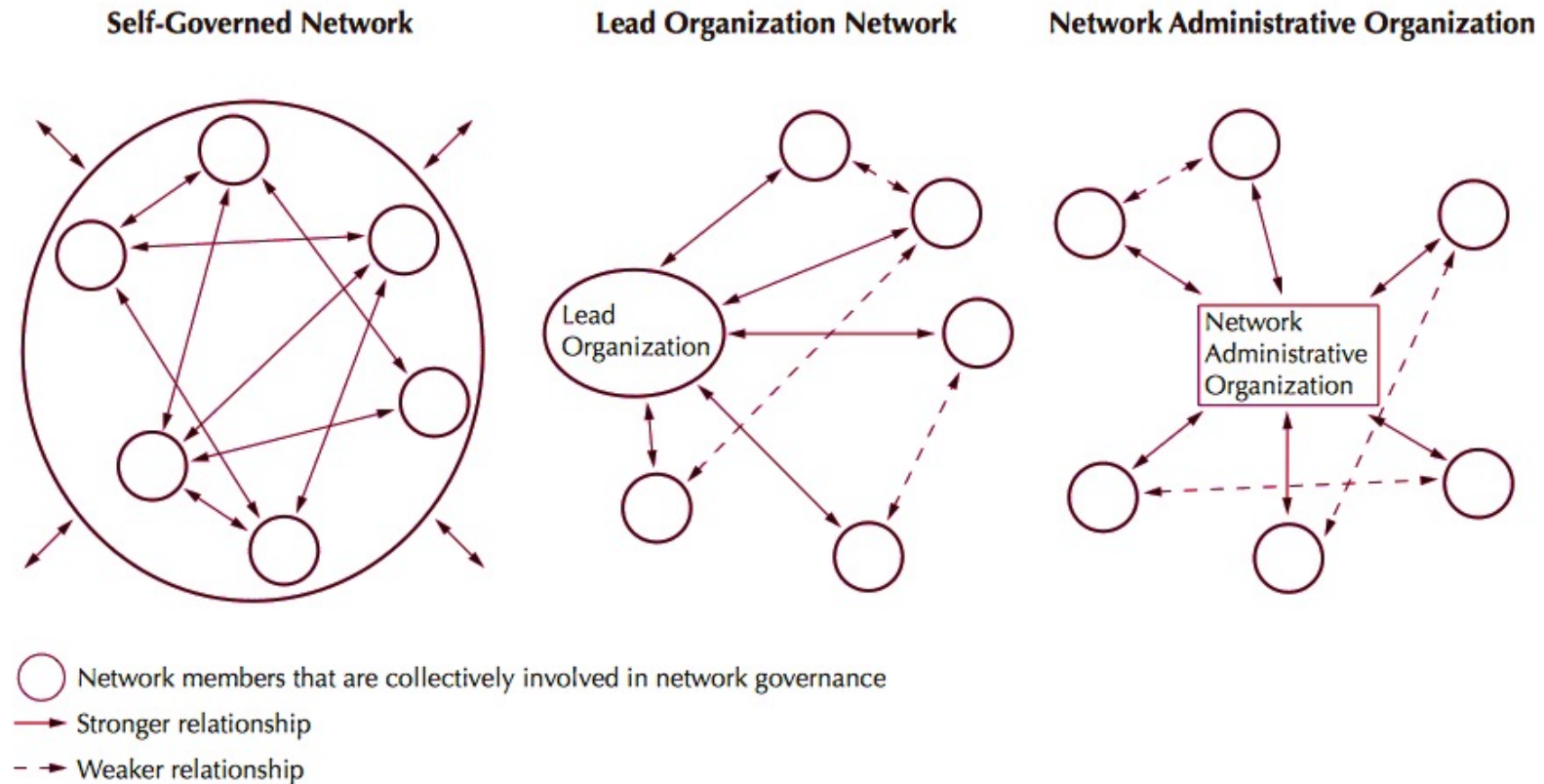
Part 3: Managing collaboratives

Document and reiterate

- Shared vision
- Shared goals
- Joint strategy

Collaborative models

Figure 2: Modes of Network Governance



Source: Provan and Kenis (2005).

Elements to define

- What is its designated management entity?
- What are the roles/responsibilities of the management entity?
- Who makes decisions?
- How are decisions made and approved?
- Who can be members?
- What are the roles/responsibilities of members?
- What is its budget and revenue streams?
- How does it ensure longevity?

Example:

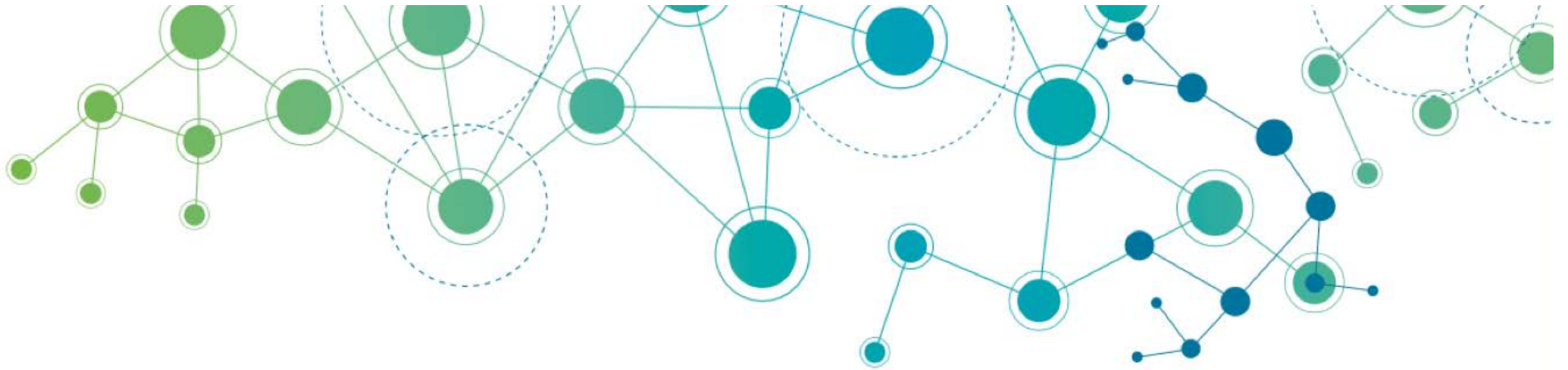


- What is its designated management entity?
 - Educopia Institute
- What are the roles/responsibilities of the management entity?
 - Host, legal and fiscal agent, staff provider, coordinator, run network
- Who makes decisions?
 - Steering Committee
- How are decisions made and approved?
 - Robert's Rules, vote, consensus
- Who can be members?
 - Libraries, archives, museums, historical societies
- What are the roles/responsibilities of members?
 - Run server, package content, test before ingest, contribute back to community
- What is its budget and revenue streams?
 - .5 FTE, \$10K consulting, \$20K infrastructure costs
- How does it ensure longevity?
 - Constant communication, 3 yr contracts, fiscal/legal responsibility, annual review

Example: “INDiPres”

- What is its designated management entity?
 - Indiana State Library + Foundation
- What are the roles/responsibilities of the management entity?
 - Host, legal and fiscal agent, seed funding, coordinator, (*community education?*)
- Who makes decisions?
 - ????
- How are decisions made and approved?
 - ????
- Who can be members?
 - Libraries, archives, museums, historical societies, public good institutions (?)
- What are the roles/responsibilities of members?
 - ISU: run server for network, ingest point
 - Everyone else: Run server, package content, test before ingest, contribute back to community
- What is its budget and revenue streams?
 - \$2500/year plus \$590/TB/year plus \$2.000/year server plus \$100/year per member
- How does it ensure longevity?
 - *Operational reserve, term lengths, ????*





katherine@educopia.org
@Educopia



- What can we do to better support collaboratives?
 - Education opportunities
 - Participating in bi-monthly calls
 - Recommendations for structure
 - Portal to TX, Wabash, CDP, COPPUL, etc
 - Outreach materials
 - Bridge-building activities (LAM)